



Get there

Getting around during
Wollaston Station
improvement work

> Service during Wollaston Station construction

December 7, 2017



Overview

1. Major Updates
2. Construction Sequence
3. Your Travel Options
4. Free Bus Shuttle
5. Commuter Rail at Quincy Center
6. Drive and Park at a Red Line Station
7. Snow Removal
8. Staying informed
9. Contact us

Major Updates

- The station closure date is being moved from Tuesday, January 2nd to Monday, January 8th.
- The shuttle during the closure will serve North Quincy, Wollaston and Quincy Center.
- Customers can use a CharlieCard or CharlieTicket to board the Commuter Rail for a subway fare at Quincy Center during the closure.

Construction Sequence

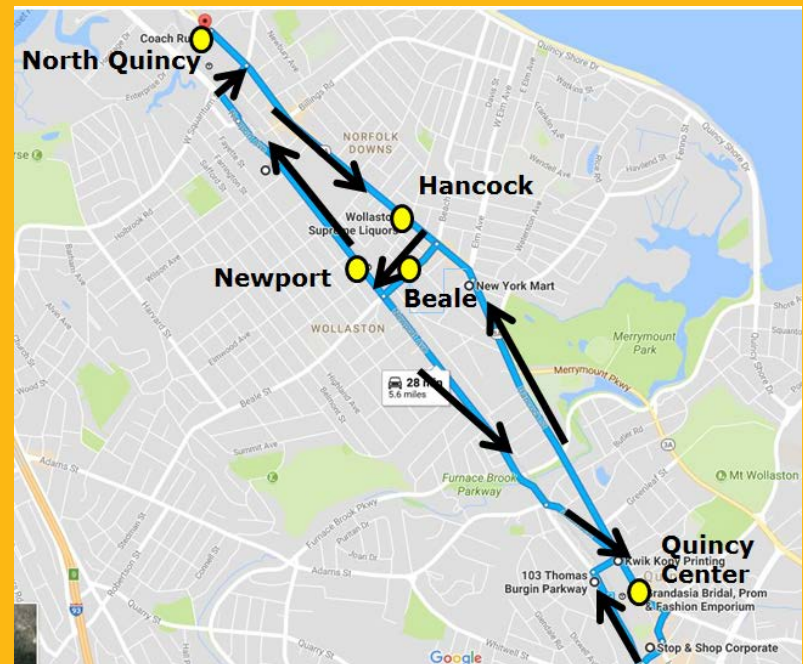
- Currently: From November 12 thru January 25, four stations beyond North Quincy to Braintree are closed from 9PM until end of service (around 1AM)
- Beginning January 8, 2018 through Summer 2019, Wollaston Station will be closed
- 423 of the 535 parking spaces will remain available during the closure
- Beginning Spring 2018, construction begins at Braintree and Quincy Adams garages and on North Quincy development

Your Travel Options

1. Free Shuttle Service between North Quincy, Wollaston and Quincy Center
2. Commuter Rail at Quincy Center
3. Drive and Park at a Red Line Station
4. Existing Bus Routes
5. Walk, Bike, Uber/Lyft to Quincy Center or North Quincy

Option 1: Free Bus Shuttle beginning January 8, 2018

- Stops at North Quincy, Hancock Street, Beale Street, Newport Ave and Quincy Center
- Designed to run approx. 10 minutes between shuttles during peak and 15 minutes off-peak
- Customers should add 15-20 minutes to their travel time



Four-Station Closure: 9PM – close, Sundays - Thursdays

When do the shutdowns happen?

Now - January 25, 2018*
Sundays through Thursdays
9 p.m. to closing

And on weekends

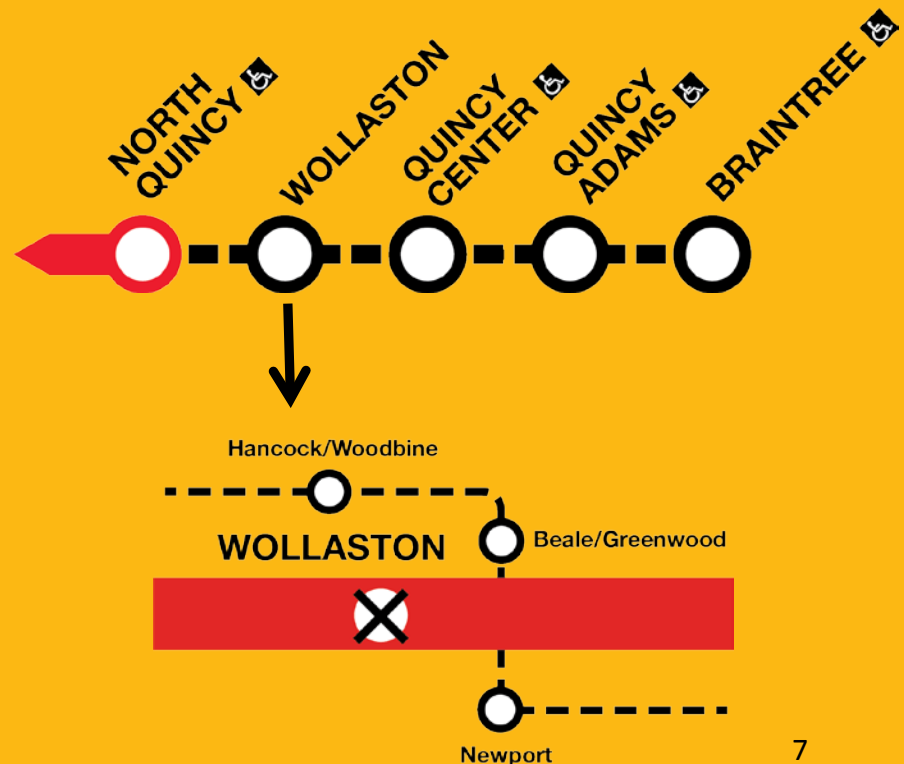
January 20 – April 22, 2018**

Note: Additional dates will be added as the project progresses.

* Excluding: Christmas Eve. and day,
New Year's Eve. and day, Martin Luther King Day

** Excluding the weekends of March 17-18, and
April 14-15.

About the bus shuttle:



Shuttle Bus Staffing and Signage

Staffing:

- 8 Yankee dispatchers at stops
- 4 Red Line platform attendants
- 3 supervisors (Yankee & MBTA)
- 4 Transit Police detail officers

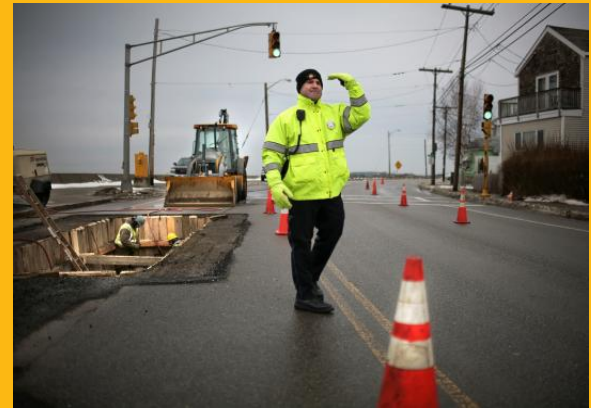
Signage:

- 50+ posters in 3 languages posted across Red Line
- 25+ A-frames posted at affected stations/stops
- Car cards in Red Line vehicles
- Banners at affected stations



Police Details

- MBTA Transit Police & City of Quincy Police
- Neponset Circle Police Detail:
 - State Police Details during AM Peak
- Transit/Quincy Police Details:
 - As required during peak hours at:
 - North Quincy Stop / Hancock intersection
 - Newport Ave. / Beale St. Intersection



Banners and Signage



WOLLASTON

CLOSING FOR RENOVATION

Red Line trains will run through Wollaston without stopping. Shuttle buses will provide service between WOLLASTON and NORTH QUINCY January 2, 2018 – Summer 2019

SỰ ĐÓNG TRẠM WOLLASTON ĐỂ SỬ MỞI LẠI

Các xe lửa của tuyến đường Đỏ (Red Line) sẽ chạy xuyên qua Wollaston mà không ngừng. Ngày 2 tháng Giêng 2, 2018 đến mùa hè năm 2019

即將關閉裝修

紅線(Red Line)火車將通過 Wollaston，而不會停車。 2018年1月2日至 2019年夏季

即将关闭装修

红线(Red Line)火车将通过 Wollaston，而不会停车。 2018年1月2日至 2019年夏季





The renovation will add elevators to make the station fully ADA-compliant and address flooding issues

Việc sửa chữa lại sẽ bao gồm cài thêm các thang máy để thực thi đúng với luật ADA và giải quyết các vấn đề về lụt lội.

裝修將增加電梯，從而使得車站完全符合《美國殘疾人法案》要求，並解決洪水問題。

 MBTA.com/Wollaston | 617-222-3200 | TTY 617-222-5146






WOLLASTON

CLOSING FOR RENOVATION

January 8 2018 – Summer 2019

SỰ ĐÓNG TRẠM WOLLASTON ĐỂ SỬ MỞI LẠI

Ngày 2 tháng Giêng 2, 2018 đến mùa hè năm 2019

即將關閉裝修

2018年1月2日至 2019年夏季

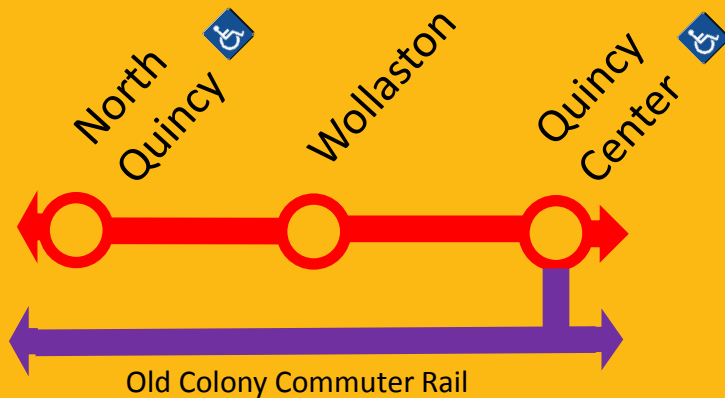
即将关闭装修

2018年1月2日至 2019年夏季

 MBTA.com/Wollaston | 617-222-3200 | TTY 617-222-5146




Option 2: Commuter Rail from Quincy Center



AM INBOUND					
Train	Line	Dpt QC	Arr. BOS	PAX	Avail. seats at QC
070	Greenbush	6:22	6:38	312	408
004	Middleboro	6:42	6:58	511	257
006	Middleboro	7:39	7:56	682	152
074	Greenbush	7:46	8:03	667	153
008	Middleboro	8:01	8:18	529	239
076	Greenbush	8:32	8:49	653	167
078	Greenbush	9:32	9:49	169	551

Total: 1927

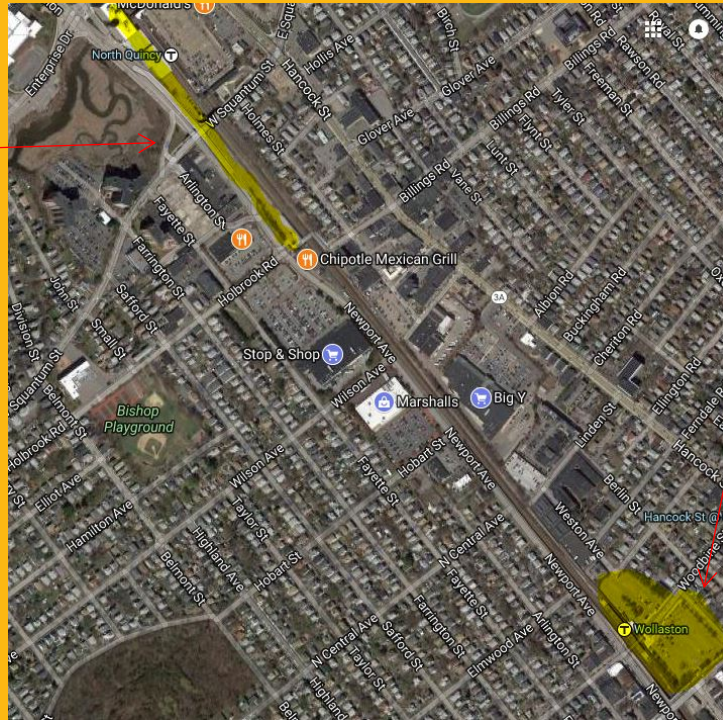
- Customers will be able to access Commuter Rail Service between Quincy Center and South Station for the duration of the project using a CharlieCard.
- One extra car will be added to trains 074, 076, 083 & 087.
- In addition train 085 (5:20 pm departure from South Station) will service Quincy Center for the duration of the project.

Option 3: Drive and Park at a Red Line station

- Wollaston: 423 of the 535 parking spaces at Wollaston station remain open throughout construction
- North Quincy: Approximately 125 existing spaces available in lot along Newport Avenue until start of construction for TOD development (no sooner than May 2018)
- MBTA will provide real-time information on parking availability on MBTA.com and Twitter

Parking at Wollaston and North Quincy

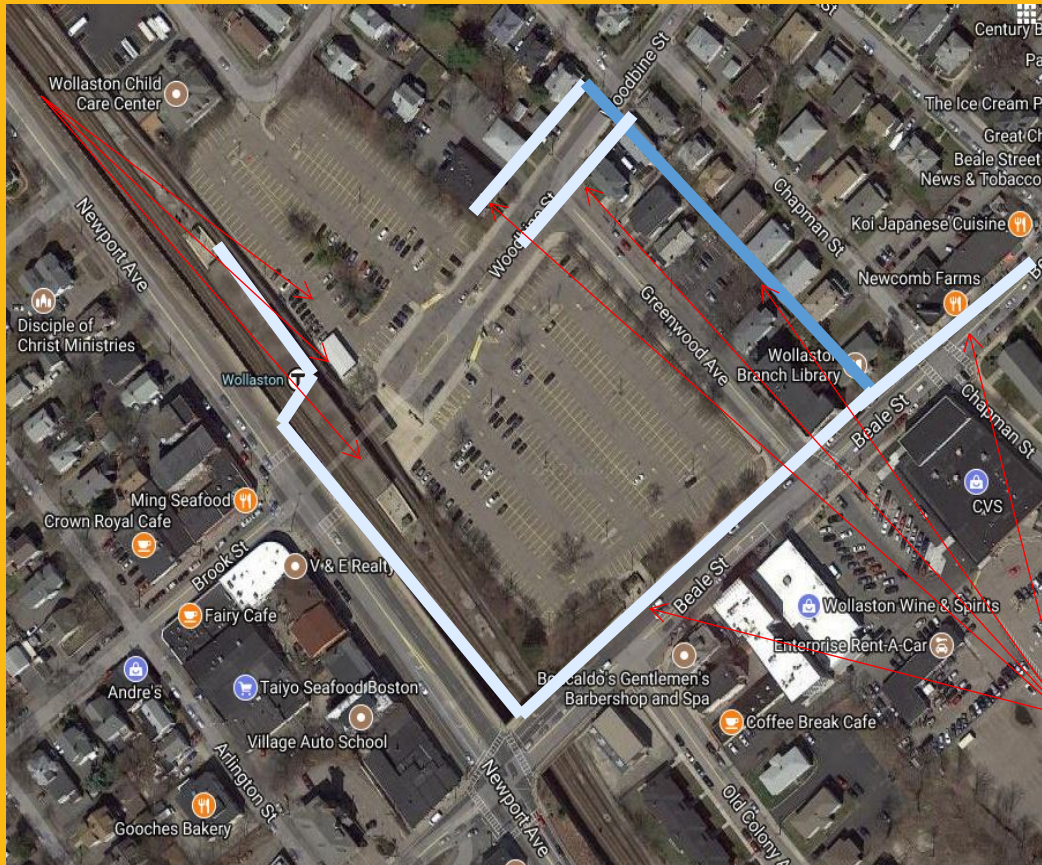
Replacement parking for the 115 spots lost during Wollaston Station Improvements project will be at the underutilized spots at the MBTA's North Quincy Station Newport Ave. lot.



438 Parking Spots remain at Wollaston Station throughout construction duration

Snow Clearing and Removal at Wollaston Station

Pedestrian Pathways to be cleared by MBTA's Wollaston Station Improvements Contractor

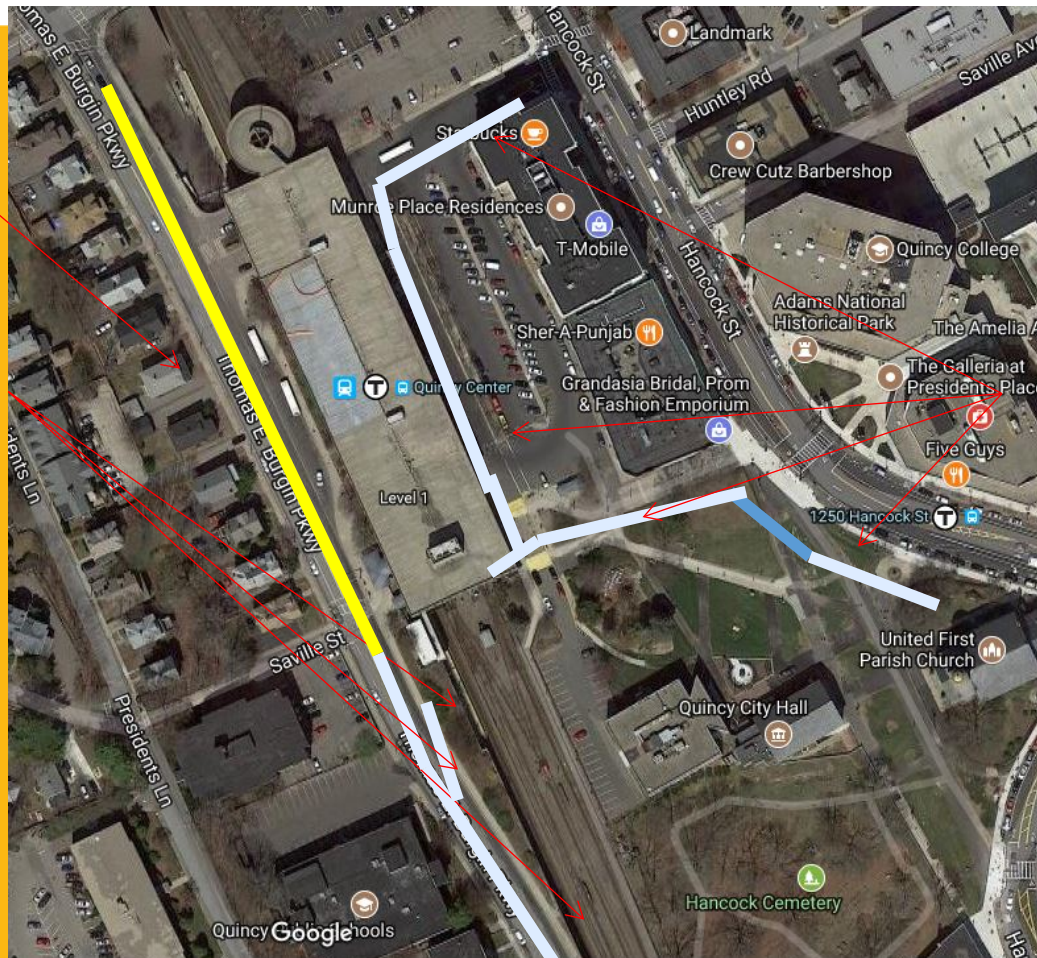


Pedestrian Pathways to be cleared by MBTA's Wollaston Station Improvements Contractor

Snow Clearing and Removal at Quincy Center

This Sidewalk closed during the Demolition duration

Pedestrian Pathways to be cleared by MBTA's Wollaston Station Improvements Contractor



Pedestrian Pathways to be cleared by MBTA's Wollaston Station Improvements Contractor

Additional Measures Under Consideration

- Working to develop parking replacement strategy for spaces that will be lost at North Quincy when TOD construction begins (May 2018)
- Working to develop and fund plan for seasonal ferry service from Squantum Point (April to October)

Staying informed

Where to get information:

- MBTA.com
- Sign-up for email updates at mbta.com/wollaston-email-updates
- T-Alerts, social media
- On train announcements
- Station signage and banners
- Directional signs and “Board here” signs
- Clear labels on buses



Contact us

617-222-3200

Call for questions, schedules, or trip planning.

For more information go to **[mbta.com/wollaston](https://www.mbta.com/wollaston)**

Thank you for your patience during construction!

Thank you for Coming!

Next CAC Meeting will be

Wednesday, January 31, 2018 at 6:30PM