



Massachusetts Bay Transportation Authority

General Manager's Remarks

Fiscal and Management Control Board Meeting

January 8, 2018



Agenda

- Wollaston Station Closure
- January 4 Snow Storm



Wollaston Station Closure

- Closed effective today for 20 months
- Complete reconstruction
- Project will make Red Line fully accessible





Wollaston Station Closure

- Parking still available at Wollaston Station
- Shuttle service to Quincy Center and North Quincy
- Free transfers with valid pass to Commuter Rail at Quincy Center

1 Free Bus Shuttle

North Quincy | Wollaston | Quincy Center

Four stops around Wollaston Station. Choose one closest to you.



Going to North Quincy? Use the stop in front of the Wollaston Station entrance.

Live near Hancock Street? There's a stop on the shuttle to Quincy Center at the corner of Hancock and Woodbine Streets.

Take your pick at the Wollaston Branch Library. Board a shuttle either to North Quincy or Quincy Center.

Going to Quincy Center? You can catch a shuttle at this stop.

Shuttles run every 10 minutes during weekday a.m./p.m. commute.
Shuttles run every 15 minutes during weekday non-commuting hours and on weekends.

Visit MBTA.com for more info. Or follow us on Twitter @MBTA.

2 Parking

Most of the parking lot will stay open at Wollaston Station during construction.

Additional spots are available at North Quincy Station via Newport Avenue.

Parking availability at Wollaston and North Quincy Stations will be tweeted every 30 minutes (6 a.m. to 8 a.m.) during the weekday morning commute. Follow us @MBTA.

3 Commuter Rail Options

Ride the train between Quincy Center and South Station for the same price as a subway fare. Subway monthly passes accepted. Show your CharlieCard or CharlieTicket when boarding.

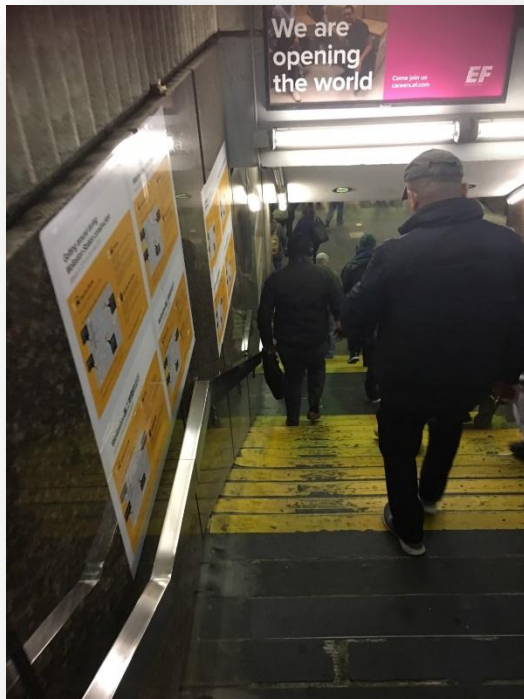
More coaches are being added on popular commuter trains, too.

 Massachusetts Bay Transportation Authority



Wollaston Station Closure

- Customer communications
- Wayfinding signage





Wollaston Station Closure

- We acknowledge 20 months is considerable
- Appreciate our customers' patience
- Thanks to the city of Quincy for collaboration





January 4, 2018 snow storm

- Thank you to the men and women of the MBTA, our vendors and contractors, and our municipal partners





January 4, 2018 snow storm

- Unified Snow and Ice Operations Plan
- Detailed playbook

T MBTA SITUATIONAL AWARENESS
Report #07 Storm Grayson Part 2 MBTA StormDesk | As of 11:30AM on Friday, January 5, 2018
Issued by the MBTA Storm Desk (stormdesk@mbta.com)

SITUATION

- Red, Orange, Blue, Green Lines: Regular weekday service. Aquarium Station is open.
- Mattapan High Speed Line: Regular weekday service.
- Bus: Regular weekday service. "Snow Route(s)" in effect: Route 11 outbound.
- Commuter Rail: Regular weekday service. Delays on many lines.
- Ferry: Service suspended. Coach shuttles are operating between West Hingham Commuter Rail and Hingham Ferry terminal.
- RIDE: Regular service.

WEATHER	AIR TEMP	PRECIPITATION	ACCUMULATION	WIND SPEED	RAIL CONDITION
Currently	14°F	Clear	Variable	23mphW	Wet

SERVICE IMPACT SUMMARY NORMAL MODERATE SEVERE

LINE	SERVICE	STATIONS/STOPS	MAINT FACILITIES	ROW INFRASTRUCTURE	REV VEHICLES
RED	Regularly scheduled service is operating on or near schedule.				168/164
ORANGE	Regularly scheduled service is operating on or near schedule.				90/96
BLUE	Regularly scheduled service is operating on or near schedule.				72/64
GREEN	Regularly scheduled service is operating on or near schedule.				146/152
MATTAPAN	Regularly scheduled service is operating on or near schedule.				4/4
SILVER	Regularly scheduled service is operating on or near schedule.				
BUS	Regularly scheduled service is operating on or near schedule.				799/790
C RAIL	NORTH	Multiple delays.			
	SOUTH	Regularly scheduled service is operating on or near schedule.			
C FERRY	Service suspended. Bus Shuttle operating between Hingham Intermodal Center and West Hingham Commuter Rail Station.				
RIDE	Regular weekday service is operating.				
PARKING	100% NORMAL	0% PARTIAL	0% CLOSED	No significant parking impacts reported.	

T Massachusetts Bay Transportation Authority
Snow & Ice Operations Plan 2017-2018

The collage consists of five photographs illustrating winter operations. The top-left photo shows a snowplow clearing a path next to a train. The top-right photo shows a train stopped at a snowy station platform. The middle-left photo shows a train on a snowy track. The middle-right photo shows a train stopped at a snowy station. The bottom-right photo shows a bus with route 39 on a snowy street.



January 4, 2018 snow storm

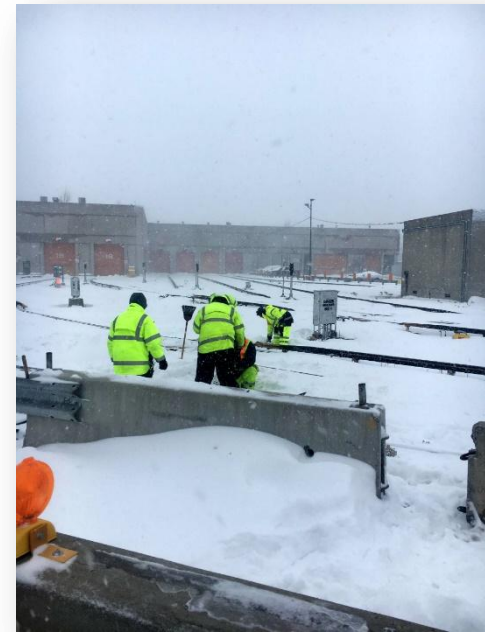
- Emergency Operations Center
- Members of each department in same room
- Efficiency in coordination, exchanging information





January 4, 2018 snow storm

- Crews working around the clock clearing snow and ice from track, signals, switches





January 4, 2018 snow storm

- Storm brought roughly 12 inches of snow to region
- Extreme temperatures over more than 10 consecutive days broke record dating back to 1896
- Throughout the weekend, vehicles and equipment for moisture buildup, icing, frozen doors, brakes





January 4, 2018 snow storm

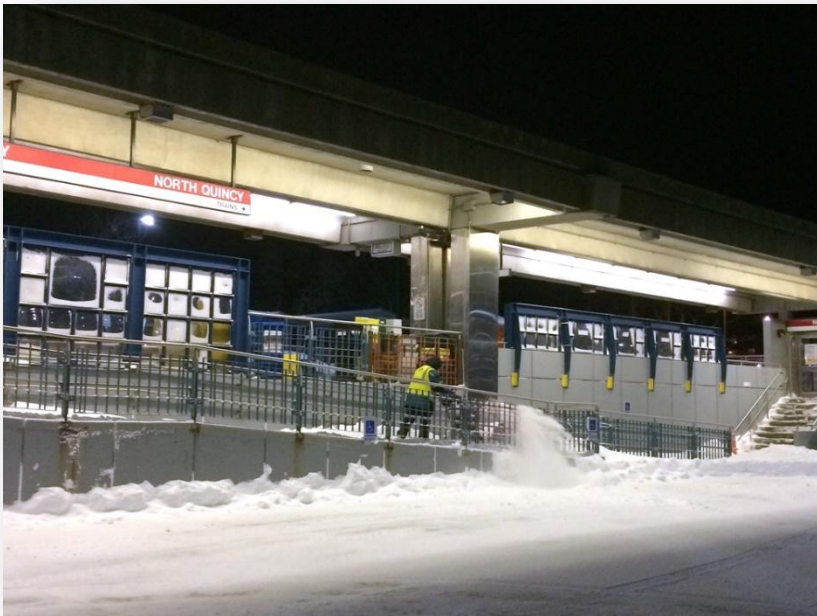
- Maintenance forces working around the clock





January 4, 2018 snow storm

- Crews clearing station platforms, bus stops





January 4, 2018 snow storm

- Thanks to every member of our team for their work
- Thanks to our customers
- And thanks to our municipal partners, vendors, and contractors

