



**Massachusetts Bay
Transportation Authority**

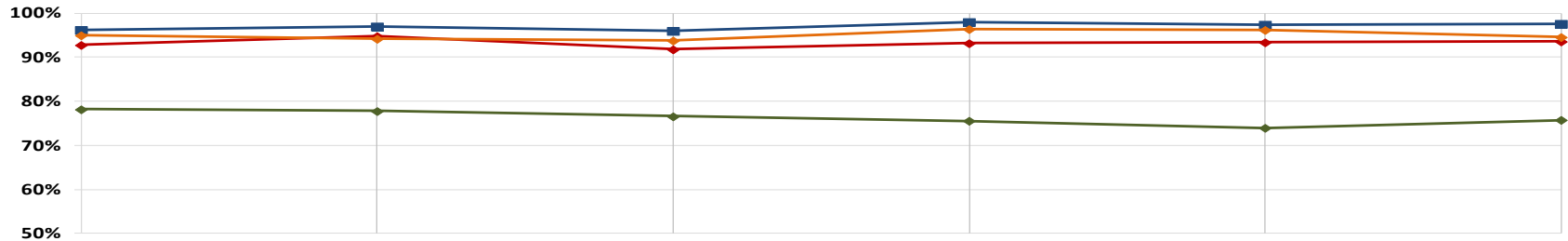
COO Remarks

February 6, 2017

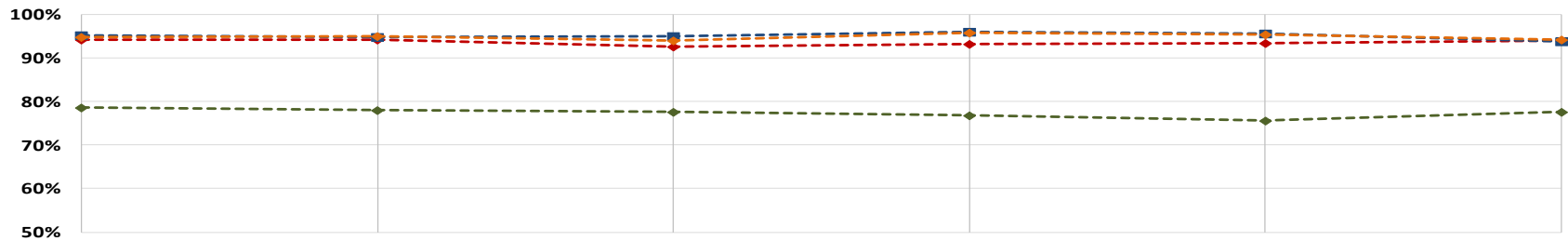


Weekly Reliability

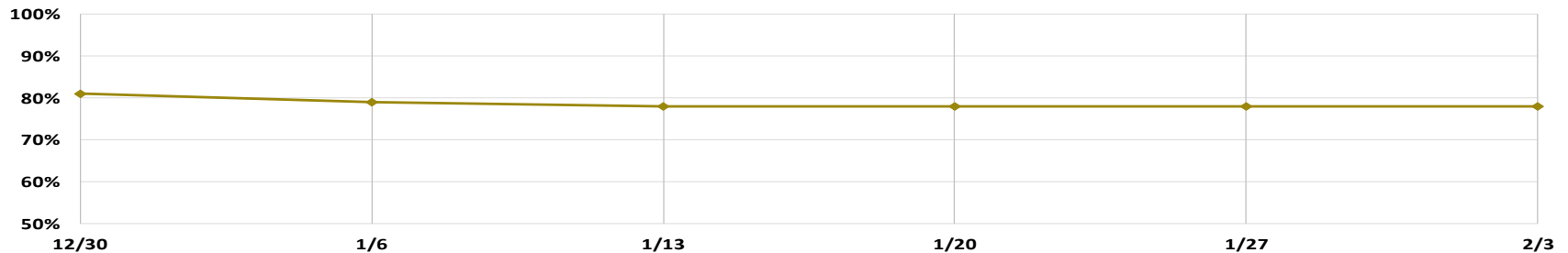
Rail Reliability: Peak



Rail Reliability: Offpeak



Bus Headway Adherence





**Massachusetts Bay
Transportation Authority**

Downtown Crossing Station

Vertical Transportation and Station Improvements (Phase I)

February 6, 2017



Project Overview

Objective: Improve Accessibility at Downtown Crossing Station

- Phase I will provide two elevators that connect Red Line Northbound to Orange Line Northbound (currently under construction)
- Phase II will provide elevators that connect Orange Line Southbound to Red Line Northbound and Southbound (currently in feasibility study)

Phase I Construction Contract NTP: 2/18/2016

Phase I Construction Contract Value: \$13.57 M

Phase I Constr. Contract Completion Date: 3/18/2018

North Passageway Impact: The North Passageway that connects Red Line Northbound to Orange Line Southbound will be closed twice in 2017. The first closure finished up this past weekend. The second closure will be approx. three months in late 2017.

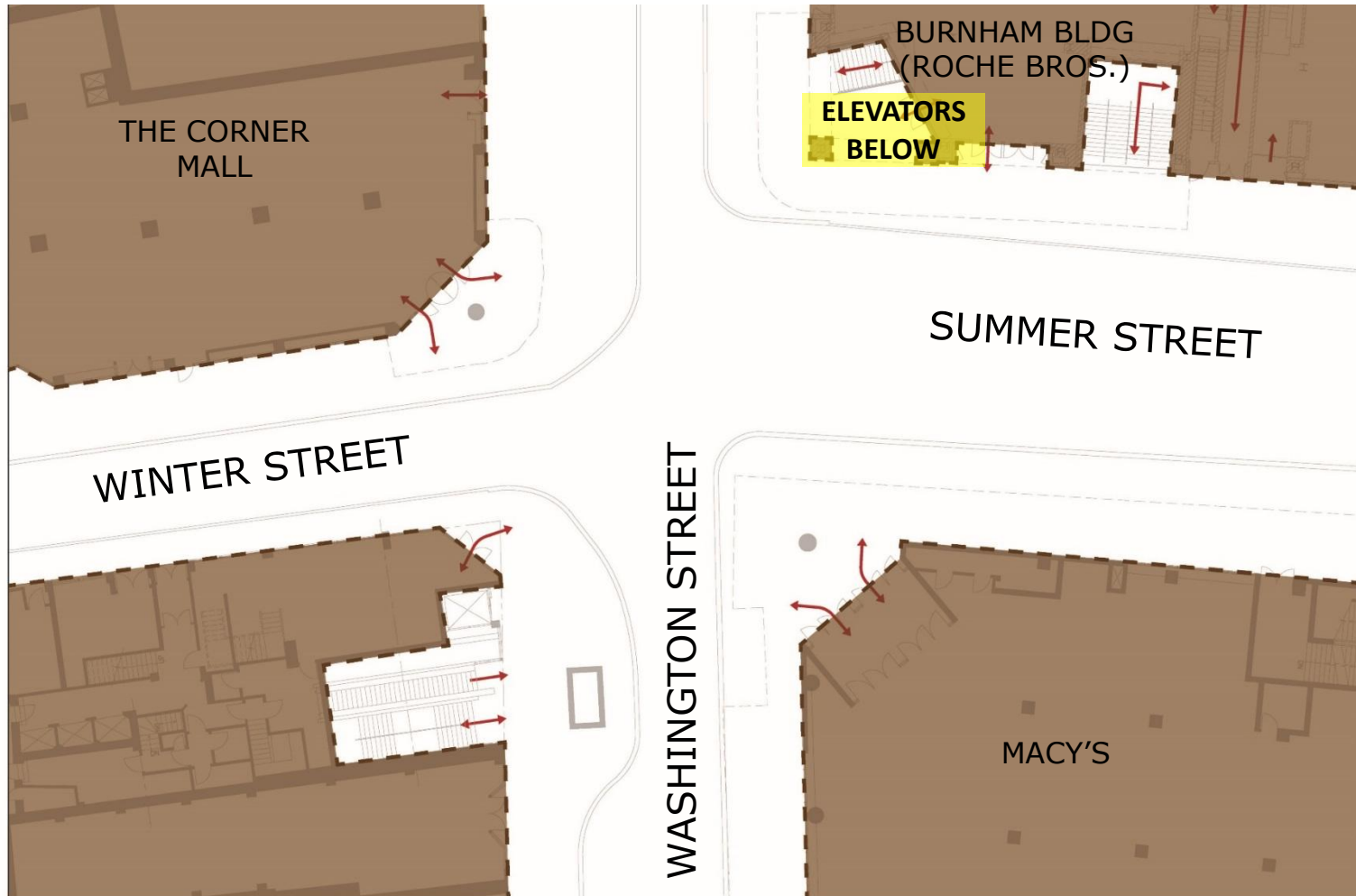


Project Location (Phase I)



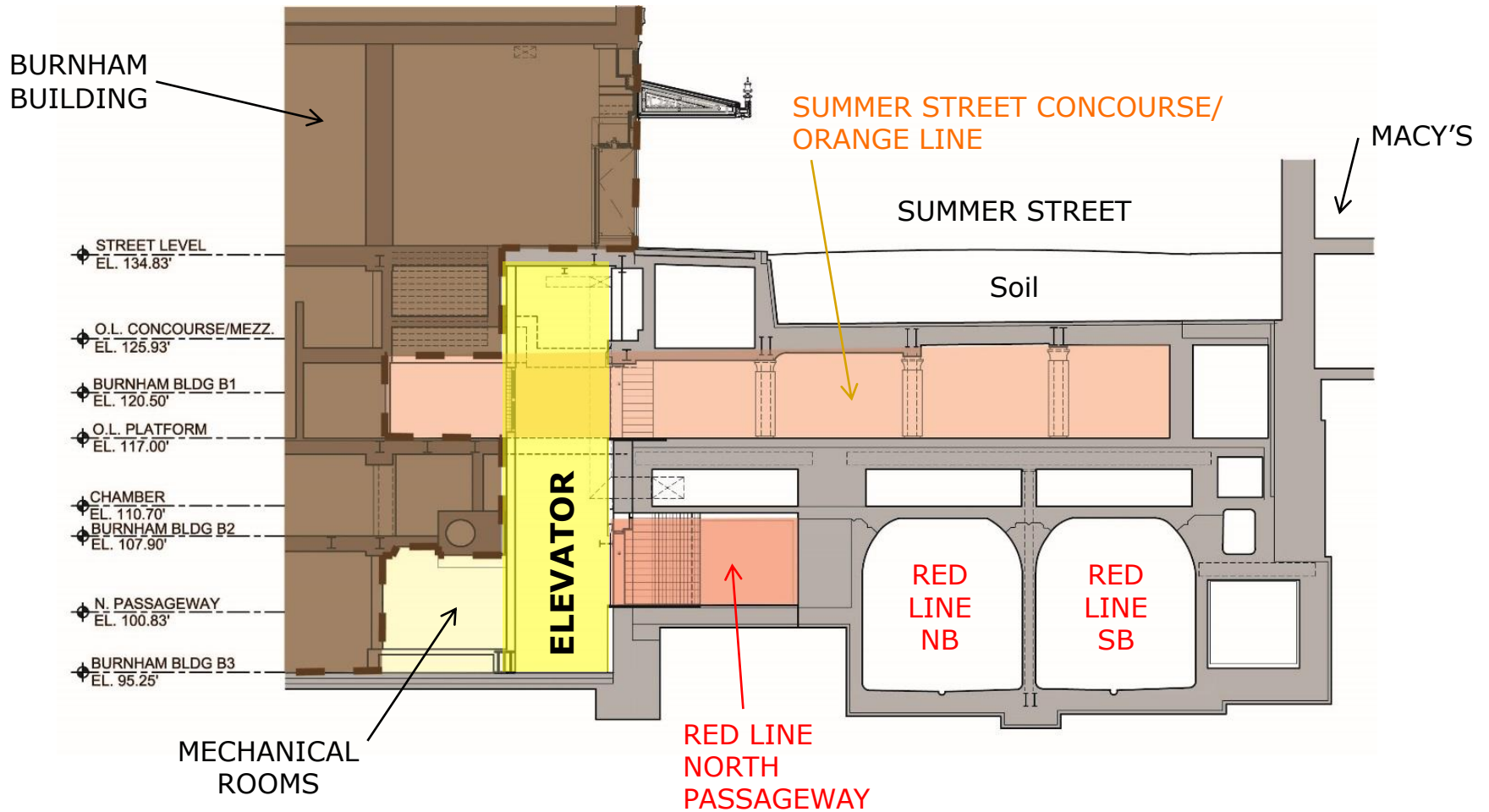


Street Level



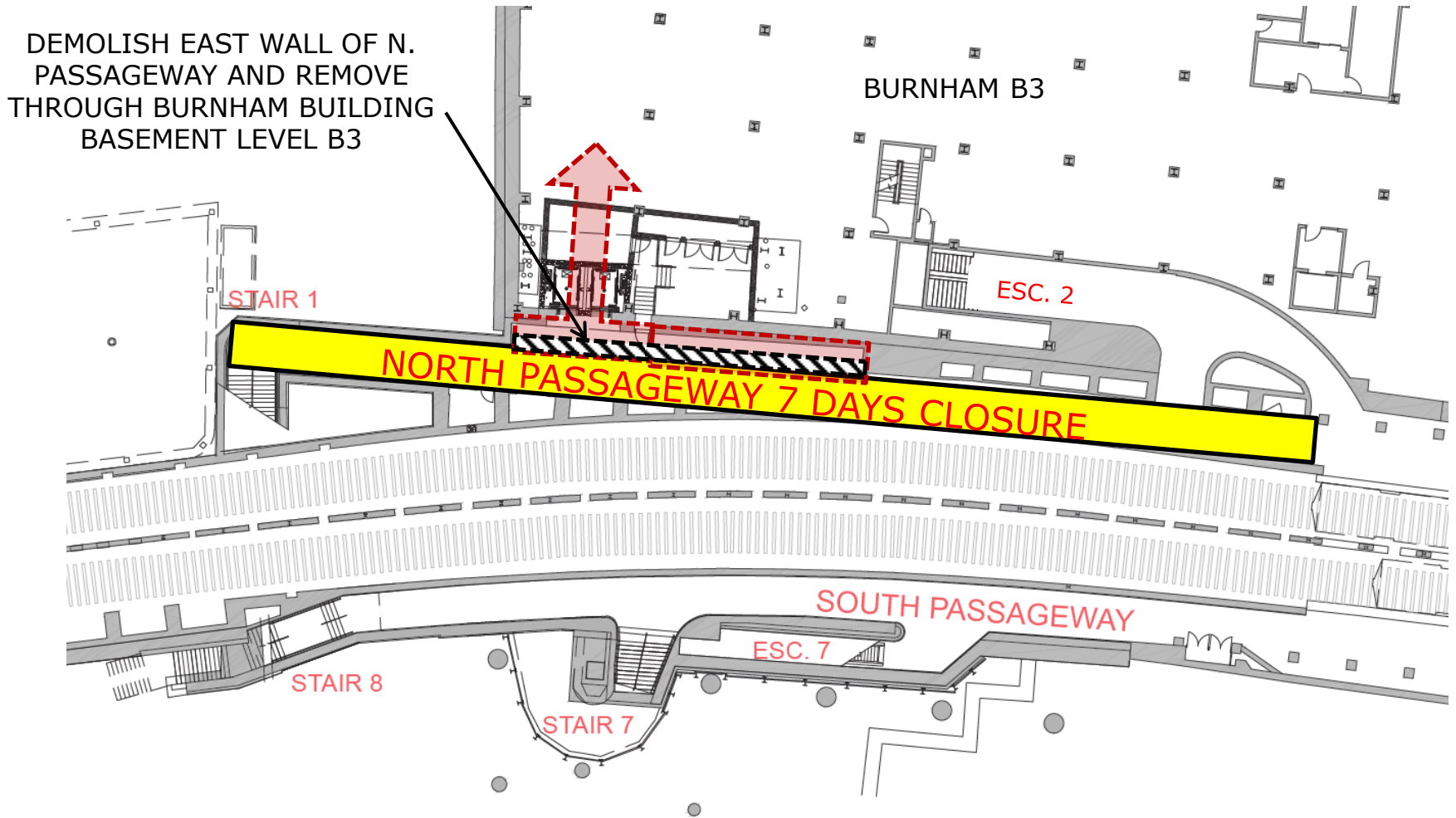


Section Through the Elevator Shaft



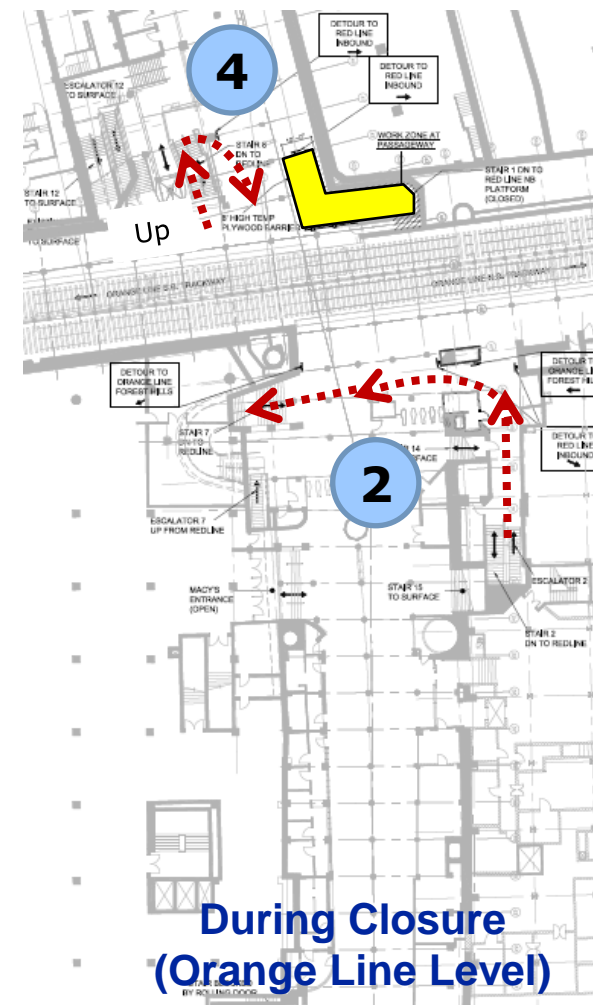
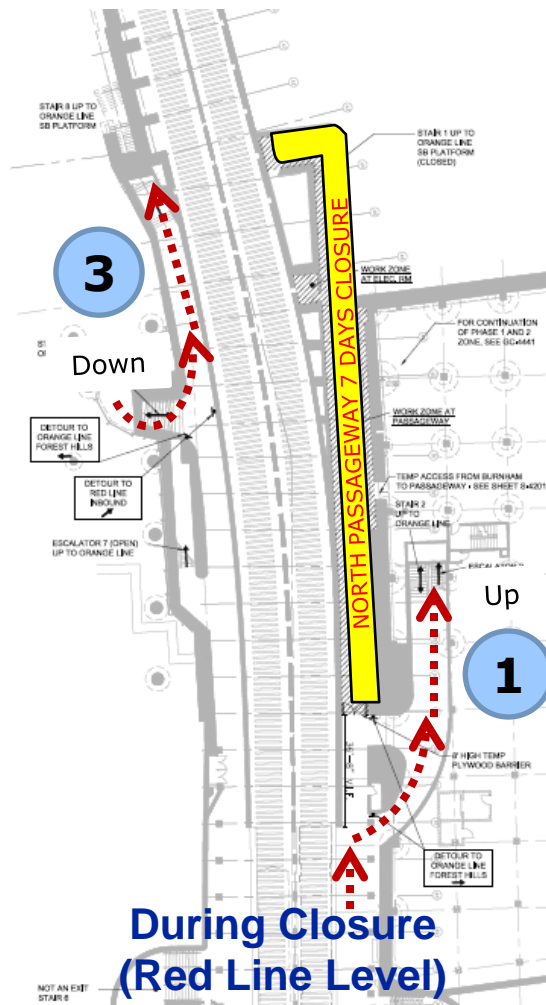
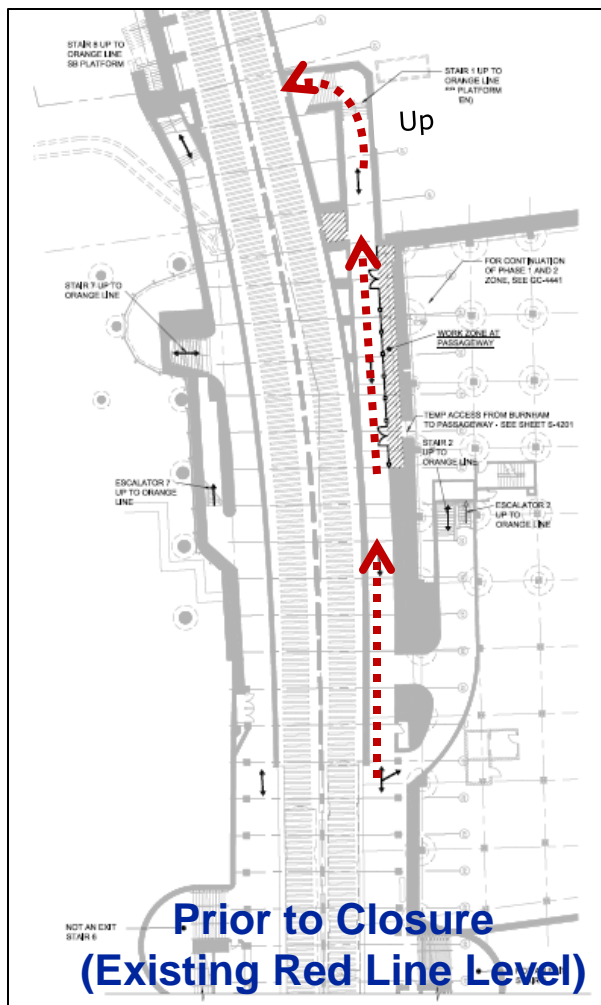


Red Line and Passageway Level (Plan View)





Red Line NB to Orange Line SB Path of Travel During North Passageway Closure





North Passageway – During First Construction Closure





North Passageway – After First Construction Closure





Operational Activities

- The closure took place the week of January 30th
- PAs (Station and Train Crews) were notified and Service Alert posted on the MBTA website so that customers are informed of pedestrian detour and that Park Street can be used as an alternative path of travel
- Additional personnel were stationed at Chauncy Street, Park Street and Downtown Crossing to help with customer service
- An operation preparation walk through was conducted on Friday, January 6th
- Signage was put up the week before the closure
- Barriers were put up on Sunday Night prior to the closure
- Work began on the morning of Monday, January 30th
- The North Passageway was opened at 7 AM Saturday, Feb. 4th (work was completed in 5 days - 2 days ahead of schedule)